


DIMENSIONS UNITS: INCH

SIZE	d	L	H	W
1/4"	0.2	1.54	1.1	2.76
3/8"	0.27	1.73	1.34	2.76
1/2"	0.36	2.24	1.34	3.54
3/4"	0.49	2.32	1.81	3.54
1"	0.63	2.8	2.24	4.88
1 1/4"	0.79	3.07	2.13	4.88
1 1/2"	0.96	3.27	2.28	6.1
2"	1.26	3.94	2.44	6.1

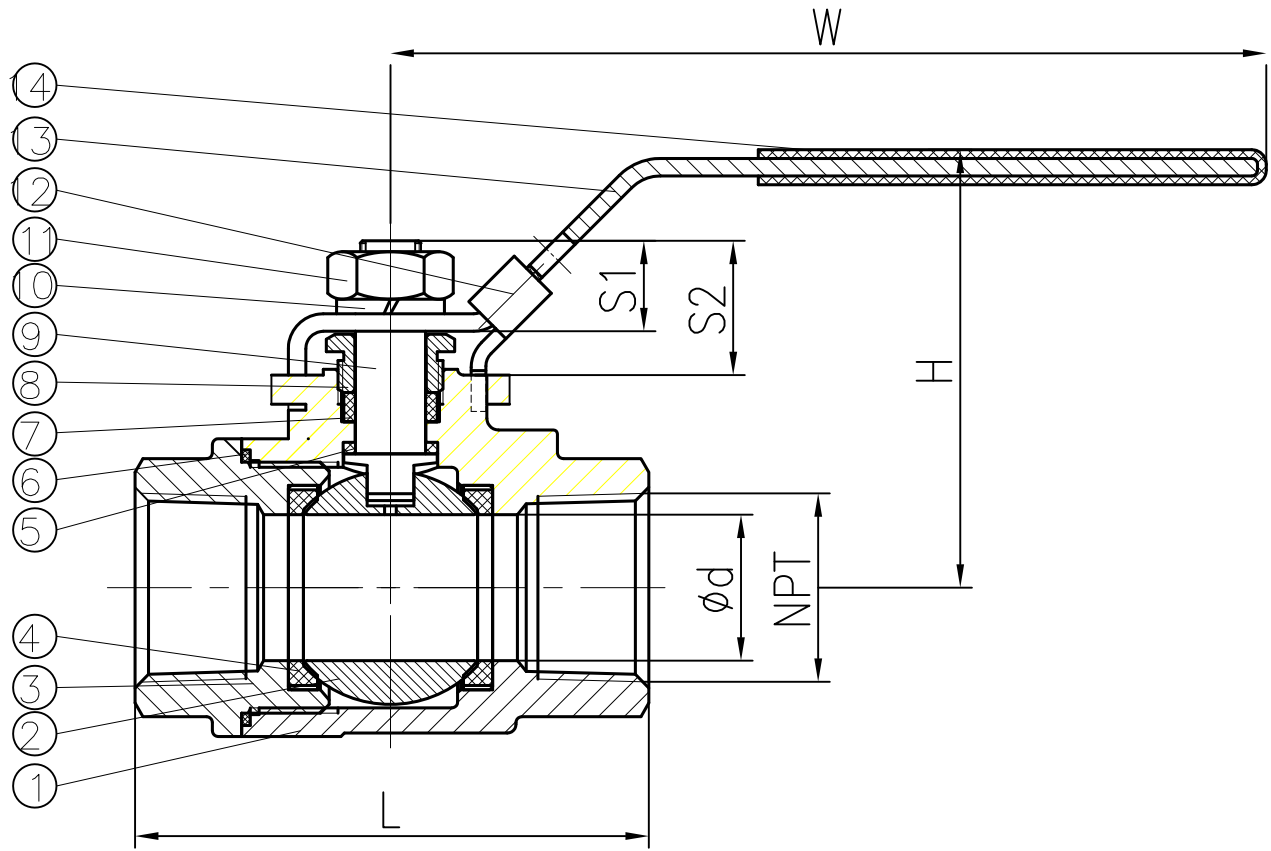
No.	PART NAME	MATERIAL	QTY
14	HANDLE COVER	PVC	1PC
13	HANDLE	201	1PC
12	LOCKING	201	1PC
11	NUT	A2-70	1PC
10	SPRING WASHER	304	1PC
09	GLAND	304	1PC
08	STEM PACKING	PTFE	1PC
07	STEM	316	1PC
06	THRUST WASHER	PTFE	1PC
05	INSERT	316	1PC
04	WASHER	316	1PC
03	SEAT	PTFE	2PCS
02	BALL	316	1PC
01	BODY	CF8M	1PC

Revisions			
B			
C			
D			
E			
Drawn By		Date	2017-3-17
Checked By		Date	2017-3-17
Approved By		Date	2017-3-17
Certified By		Date	2017-3-17



Desc: **1-PC BALL VALVE R10STC**

Scale:      DWG No.:      Rev.:



DIMENSIONS

UNITS: INCH

SIZE	d	L	H	W	S1	S2	ISO 5211		
							FIG.	D	N
1/4"	0.45	2.09	1.97	3.82	0.3	0.53	F03	1.42	M5
3/8"	0.49	2.09	1.97	3.82	0.3	0.53	F03	1.42	M5
1/2"	0.59	2.48	2.48	3.94	0.45	0.73	F03	1.42	M5
3/4"	0.79	2.91	2.64	4.8	0.49	0.83	F04	1.65	M6
1"	0.98	3.39	2.8	5.91	0.59	0.93	F04	1.65	M6
1 1/4"	1.26	3.98	2.99	5.91	0.59	0.93	F04	1.65	M6
1 1/2"	1.5	4.21	3.54	7.17	0.81	1.2	F05	1.97	M6
2"	1.97	4.84	3.86	7.17	0.81	1.2	F05	1.97	M6
2 1/2"	2.56	6.14	4.96	9.84	0.98	1.5	F07	2.76	M8
3"	3.15	7.28	5.51	9.84	1.06	1.48	F07	2.76	M8

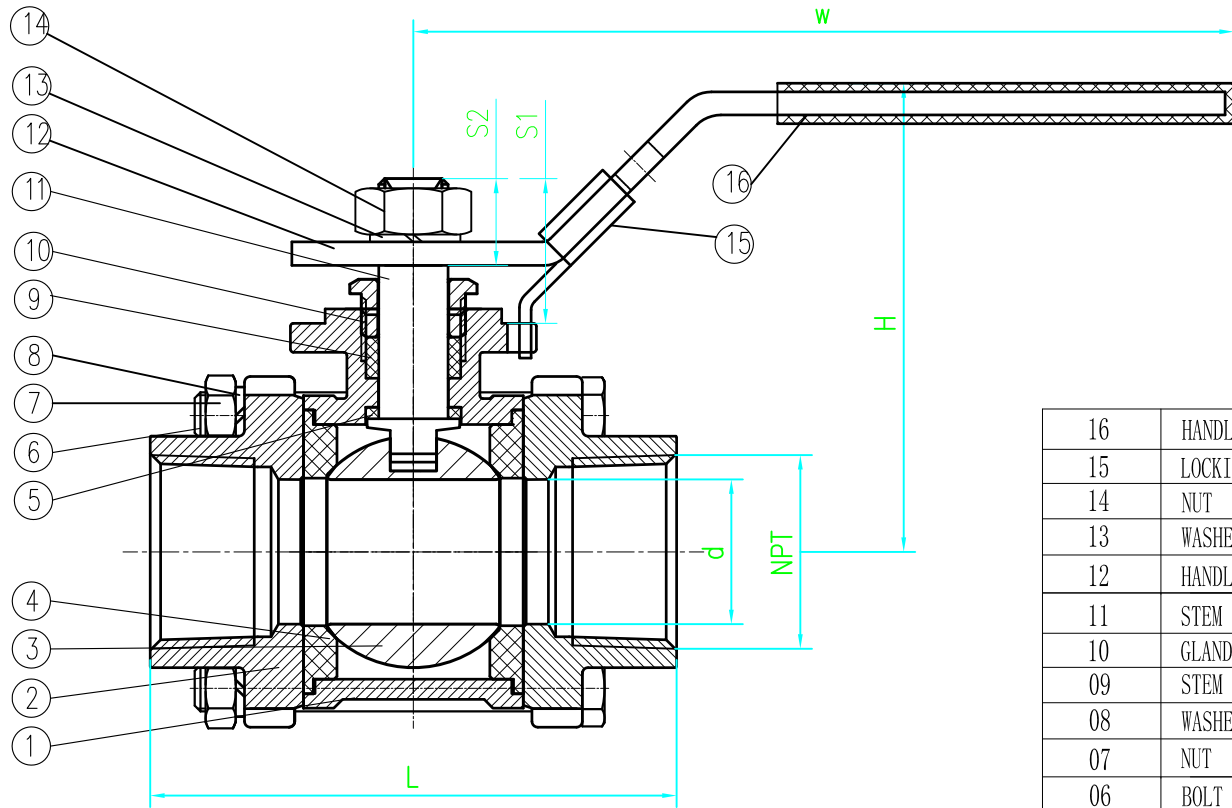
14	HANDLE COVER	PVC	1PC
13	HANDLE	SS201/A240/ASTM	1PC
12	LOCKING	SS201/A240/ASTM	1PC
11	NUT	A2-70	1PC
10	SPRING WASHER	SS304	1PC
09	STEM	SS316/A276/ASTM	1PC
08	GLAND BUSH	SS304/A276/ASTM	1PC
07	STEM PACKING	PTFE	1PC
06	JOINT GASKET	PTFE	1PC
05	THRUST WASHER	PTFE	1PC
04	SEAT	RPTFE	2PCS
03	CAP	CF8M/WCB	1PC
02	BALL	F316/A182/ASTM	1PC
01	BODY	CF8M/WCB	1PC
No.	PART NAME	MATERIAL	QTY

Revisions			
B			
C			
D			
E			
Drawn By		Date	2017-3-17
Checked By		Date	2017-3-17
Approved By		Date	2017-3-17
Certified By		Date	2017-3-17

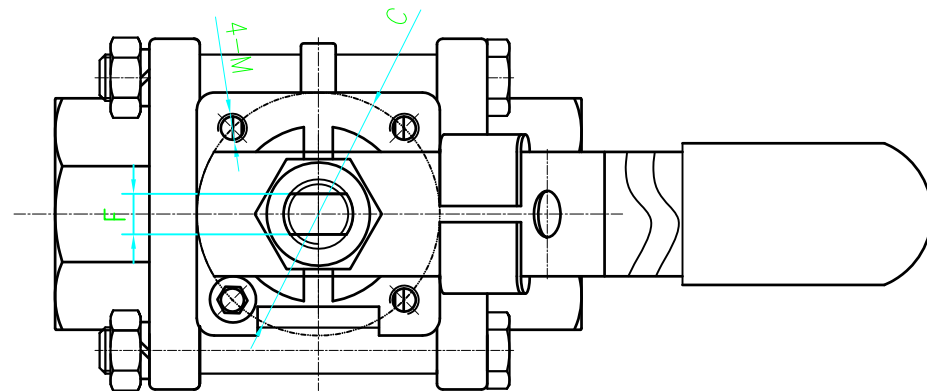


Desc: 2PC BALL VALVE  
F11SRC/F11SRS

Scale: DWG No.: Rev.:




SIZE	d	L	F	C	M	H	W	S1	S2
1/4	0.46	2.7	0.2	1.42	M5	2.13	3.94	0.75	0.43
3/8	0.49	2.7	0.2	1.42	M5	2.13	3.94	0.75	0.43
1/2	0.59	2.87	0.2	1.42	M5	2.68	4.53	0.69	0.39
3/4	0.79	3.31	0.24	1.42	M5	2.99	4.53	0.83	0.51
1	0.98	3.56	0.28	1.65	M5	3.15	5.71	0.96	0.59
1-1/4	1.26	4.41	0.28	1.65	M5	3.23	5.71	0.91	0.59
1-1/2	1.5	4.72	0.35	1.97	M6	3.54	7.09	1.08	0.71
2	1.97	5.78	0.35	1.97	M6	4.09	7.09	1.08	0.71
2-1/2	2.56	6.73	0.59	2.76	M8	4.53	9.84	1.59	1.16
3	3.15	7.99	0.59	2.76	M8	4.92	9.84	1.59	1.16
4	3.94	10.47	0.59	4.02	M12	6.14	11.26	1.44	1.22



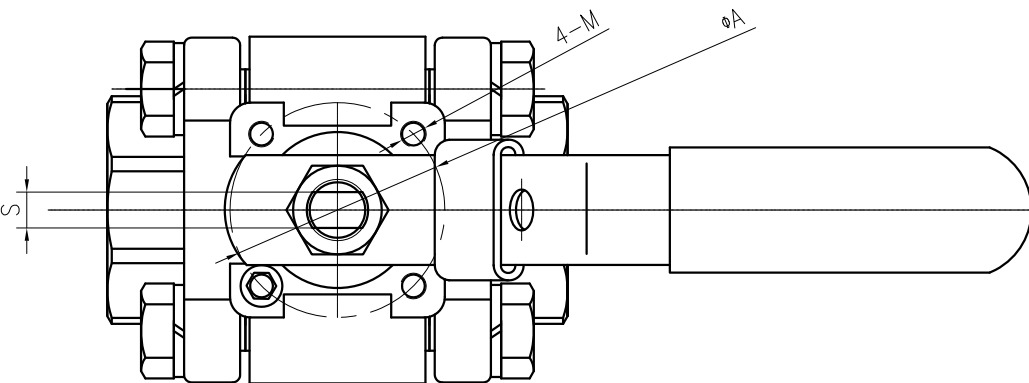
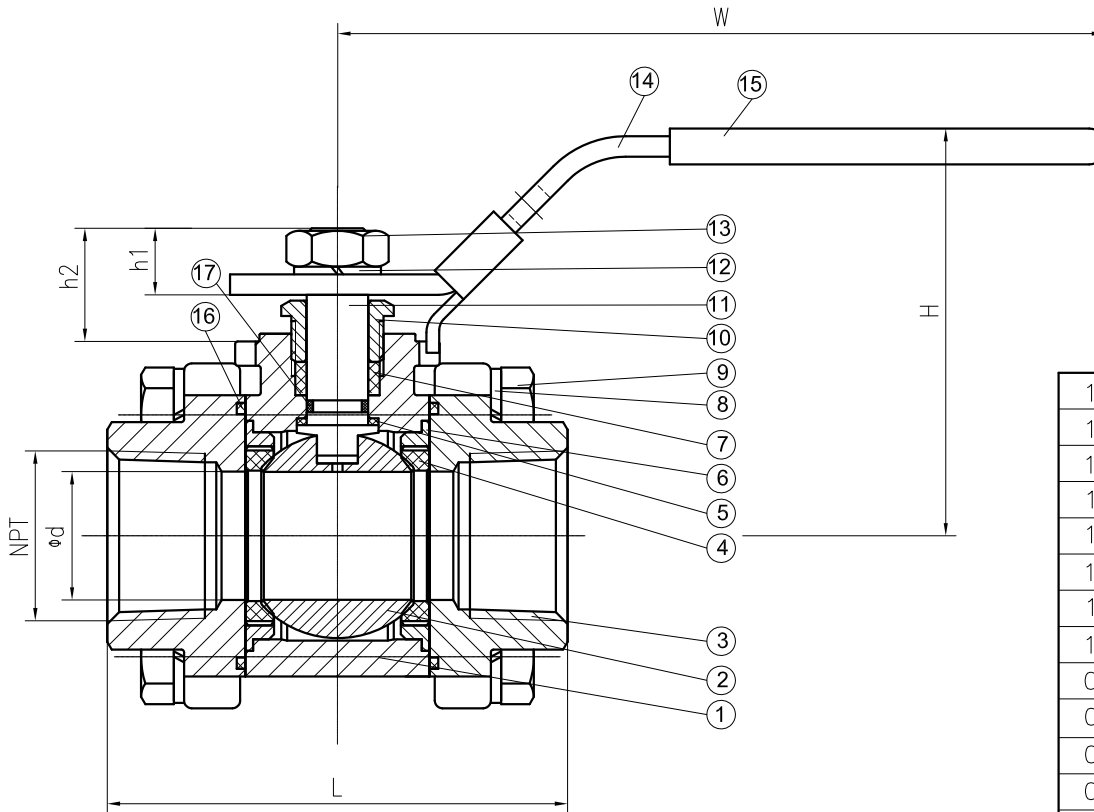
16	HANDLE COVER	PVC	PVC	PVC
15	LOCKING DEVICE	201	201	201
14	NUT	A2-70	A2-70	A2-70
13	WASHER	304	304	304
12	HANDLE	201	201	201
11	STEM	316	304	304
10	GLAND BUSH	304	304	304
09	STEM PACKING	PTFE	PTFE	PTFE
08	WASHER	304	304	304
07	NUT	A2-70	A2-70	A2-70
06	BOLT	A2-70	A2-70	A2-70
05	THRUST WASHER	PTFE	PTFE	PTFE
04	SEAT	RPTFE	RPTFE	RPTFE
03	BALL	316	304	304
02	CAP	CF8M	CF8	WCB
01	BODY	CF8M	CF8	WCB
No.	PART NAME	MATERIAL	MATERIAL	MATERIAL

Revisions			
A			
B			
C			
D			
E			
Drawn By		Date	2017-3-17
Checked By		Date	2017-3-17
Approved By		Date	2017-3-17
Certified By		Date	2017-3-17



Desc:  
**3-PC BALL VALVE**  
**F12SRC/F12SRS/F12WRC/F12WRS**

Scale:      DWG No.:      Rev.:



SIZE	L	d	H	W	A	h1	h2	S
1/4	2.95	0.45	2.28	4.53	1.42	0.35	0.61	0.24
3/8	2.95	0.45	2.28	4.53	1.42	0.35	0.61	0.24
1/2	2.95	0.59	2.28	4.53	1.42	0.35	0.61	0.24
3/4	3.15	0.79	2.56	5.91	1.65	0.49	0.83	0.28
1	3.54	0.98	2.95	5.91	1.65	0.55	0.94	0.28
1-1/4	4.33	1.26	3.54	7.48	1.97	0.59	0.94	0.35
1-1/2	4.72	1.5	3.78	9.06	1.97	0.71	1.1	0.39
2	5.51	1.97	4.13	9.06	1.97	0.71	1.1	0.39

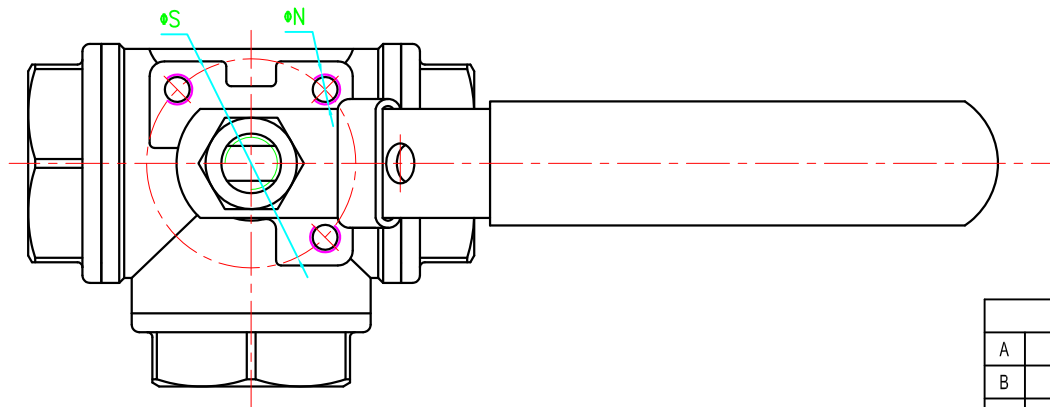
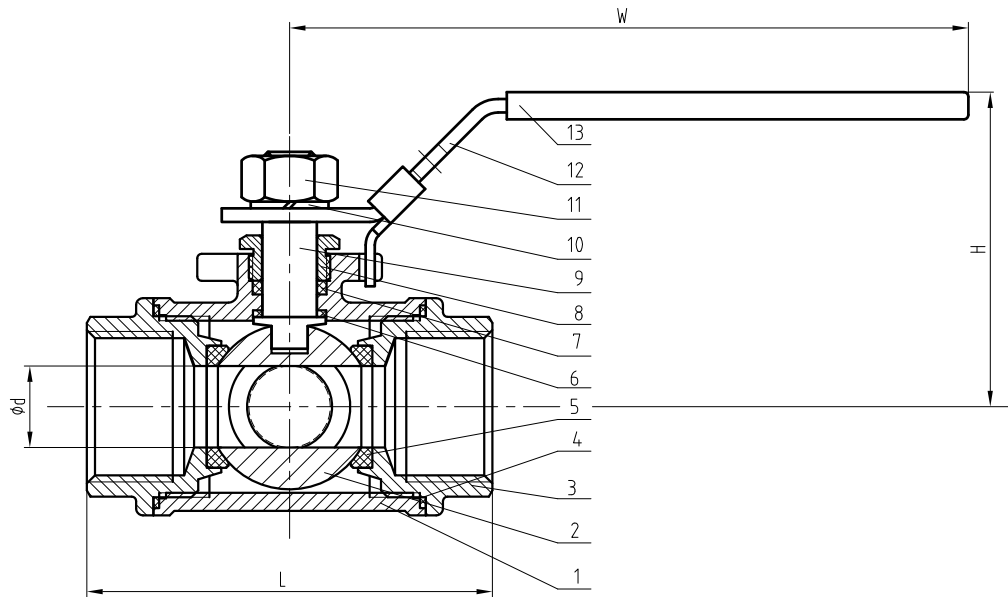
17	O-RING	VITON	VITON	1PC
16	Washer	GRAPHITE	GRAPHITE	2PC
15	Handle Cover	PVC	PVC	1PC
14	Handle	SS 201	SS 201	1PC
13	Nut	A2-70	A2-70	1PC
12	Elastic Washer	SS	SS	1PC
11	Stem	316	316	1PC
10	Gland	304	304	1PC
09	Bolt	B8	B7	8PCS
08	Elastic Washer	SS	SS	8PCS
07	Packing	GRAPHITE	GRAPHITE	1PC
06	Joint Gasket	TFM-1600	TFM-1600	2PCS
05	Thrust Washer	PTFE	PTFE	1PC
04	Seat	TFM-1600	TFM-1600	2PCS
03	Cap	CF8M	WCB	2PCS
02	Ball	F316	F316	1PC
01	Body	CF8M	WCB	1PC
No.	Part Name	Material	Material	Q'TY

Revisions			
A			
B			
C			
D			
E			
Drawn By		Date	2017-3-17
Checked By		Date	2017-3-17
Approved By		Date	2017-3-17
Certified By		Date	2017-3-17



Desc: **3-PC BALL VALVE**  
**F20SRC/F20SRS/F20WRC/F20WRS**

Scale: DWG No.: Rev.:



SIZE	d	L	W	H	ISO5211		
					FIG.	S	N
1/4"	0.31	2.56	3.94	1.93	F03	1.42	M6
3/8"	0.31	2.56	3.94	1.93	F03	1.42	M6
1/2"	0.39	2.81	4.33	2.28	F03	1.42	M6
3/4"	0.59	3.26	4.72	2.56	F04	1.65	M6
1"	0.71	3.53	5.91	2.76	F04	1.65	M6
1 1/4"	0.94	4.8	5.91	3.07	F04	1.65	M6
1 1/2"	1.26	5.44	7.09	3.39	F05	1.97	M6
2"	1.5	5.97	7.09	3.78	F05	1.97	M6

13	HANDLE COVER	PVC	1PC
12	HANDLE	SS 201	1PC
11	NUT	A2-70	1PC
10	SPRING WASHER	304	1PC
09	STEM	316	1PC
08	GLAND	304	1PC
07	STEM PACKING	PTFE	1PC
06	THRUST WASHER	PTFE	1PC
05	SEAT	PTFE	4PCS
04	JOINT GASKET	PTFE	3PCS
03	CAP	CF8M	3PCS
02	BALL	316	1PC
01	BODY	CF8M	1PC
No.	PART NAME	MATERIAL	QTY

Revisions			
A			
B			
C			
D			
E			
Drawn By		Date	2017-3-17
Checked By		Date	2017-3-17
Approved By		Date	2017-3-17
Certified By		Date	2017-3-17



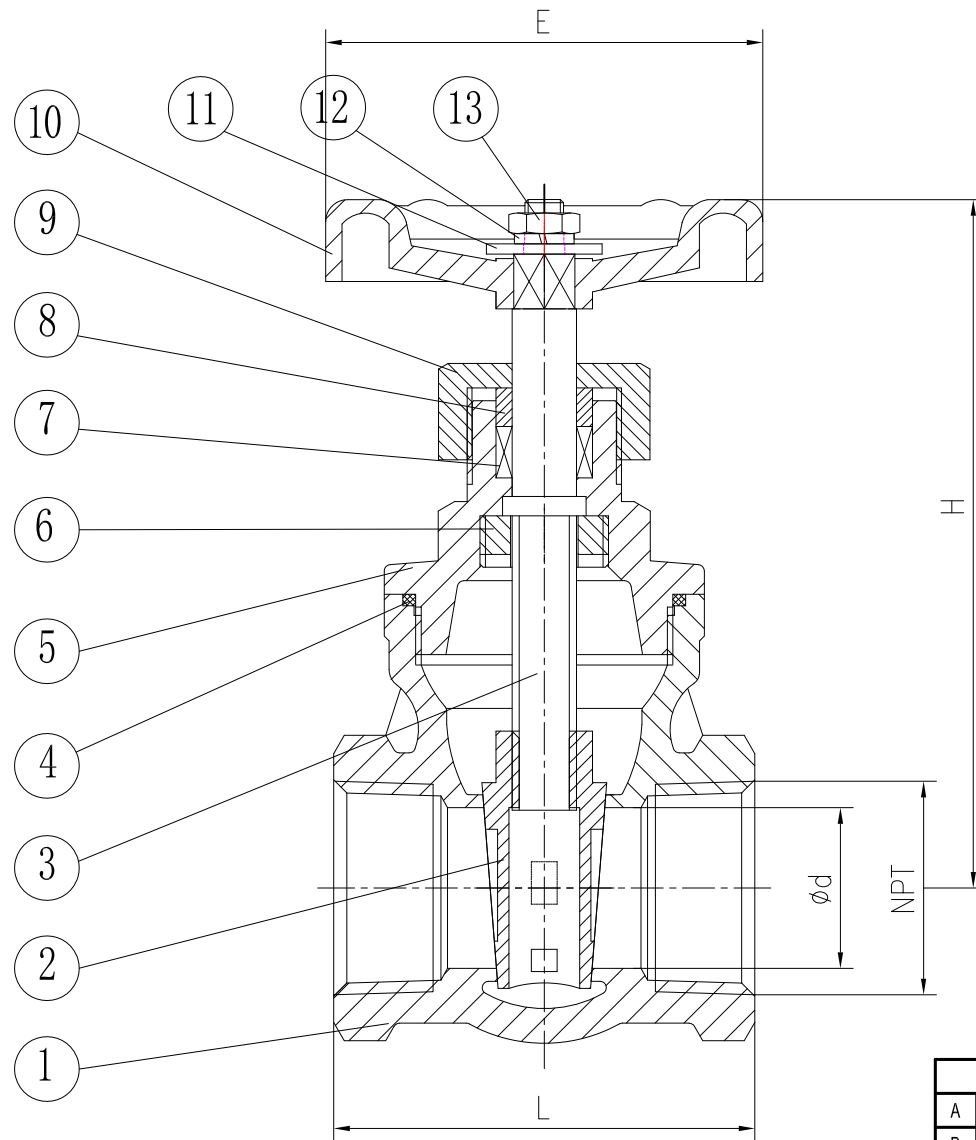
Desc:

**3 WAY BALL VALVE  
MP11SRLC/MP11SRTC**

Scale:

DWG No.:

Rev.:



SIZE	L	d	E	H
1/2"	2.2	0.59	2.76	3.54
3/4"	2.44	0.79	2.76	3.66
1"	2.6	0.98	3.15	4.25
1 1/4"	2.95	1.26	3.15	4.84
1 1/2"	3.35	1.5	3.54	5.71
2"	3.86	1.97	3.94	6.3

DIMENSIONS UNITS: INCH

13	NUT	A2-70	1PC
12	SPRING GASKET	SS304	1PC
11	WASHER	SS304	1PC
10	WRENCH	AL	1PC
09	NUT	ASTM A351 CF8M	1PC
08	GLAND	SS316	1PC
07	PACKING	PTFE	1PC
06	STOPPER	ASTM A276 316	1PC
05	CAP	ASTM A351 CF8M	1PC
04	GASKET	PTFE	1PC
03	STEM	ASTM A182 F316	1PC
02	DISC	ASTM A351 CF8M	1PC
01	BODY	ASTM A351 CF8M	1PC
No.	Part Name	Material	1PC

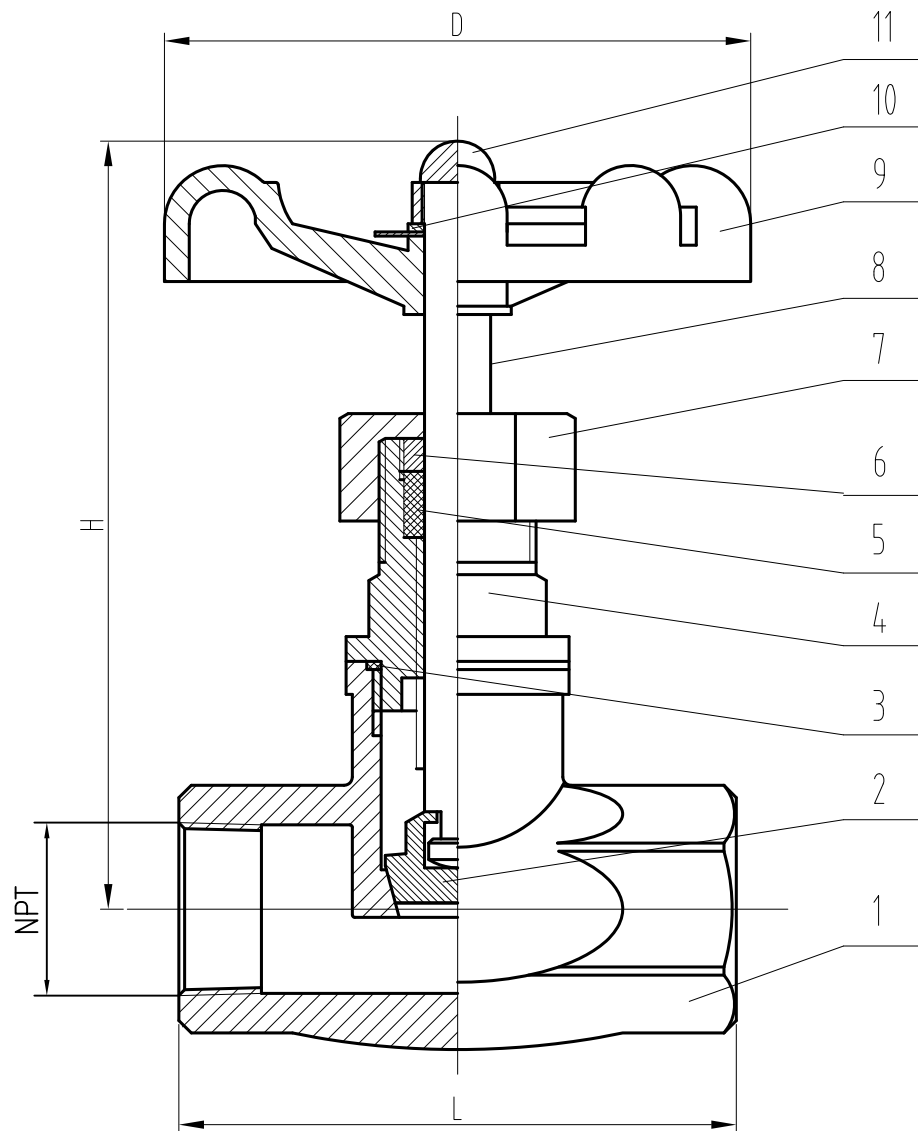
Revisions			
A			
B			
C			
D			
E			
Drawn By		Date	2017-3-17
Checked By		Date	2017-3-17
Approved By		Date	2017-3-17
Certified By		Date	2017-3-17



Desc:

**GATE VALVE  
GT20SC**

Scale: DWG No.: Rev.:



SIZE	L	D	H
1/2"	2.76	2.76	3.15
3/4"	3.27	2.76	3.74
1"	3.54	3.15	3.94
1-1/4"	4.09	3.15	5
1-1/2"	4.65	3.54	5.43
2"	5.47	3.94	5.75

11	STEM NUT	304	1PC
10	SPIN WASHER	304	1PC
09	HANDLE	AL	1PC
08	STEM	316	1PC
07	CAP NUT	CF8M	1PC
06	GLAND	316	1PC
05	PACKING	PTFE	1PC
04	BONNET	CF8M	1PC
03	GASKET	PTFE	1PC
02	DISC	CF8M	1PC
01	BODY	CF8M	1PC
NO	PART NAME	MATERIAL	Q'TY

Revisions			
A			
B			
C			
D			
E			
Drawn By		Date	2017-3-17
Checked By		Date	2017-3-17
Approved By		Date	2017-3-17
Certified By		Date	2017-3-17



Desc:

**GLOBE VALVE  
GL20SC**

Scale:

DWG No.:

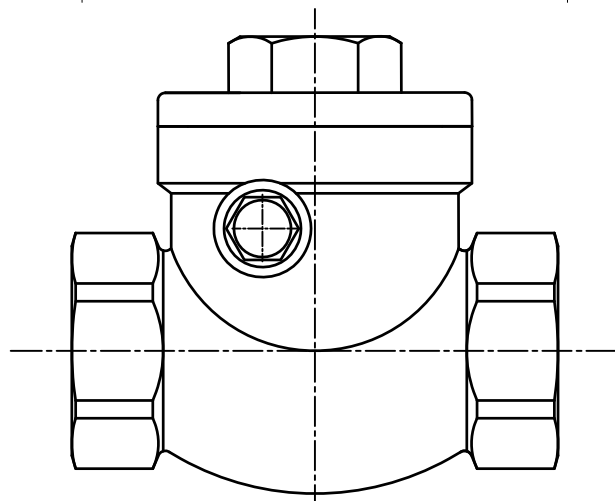
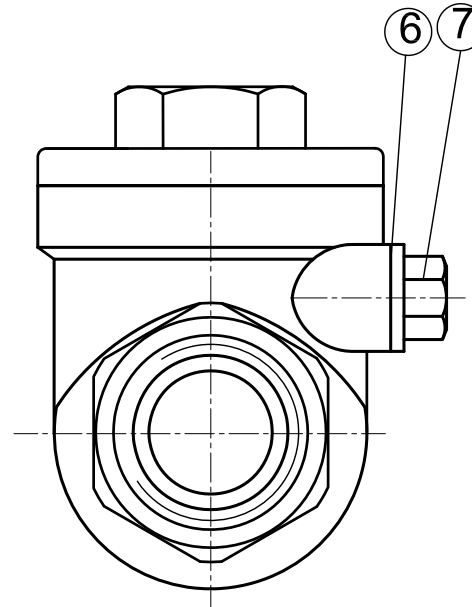
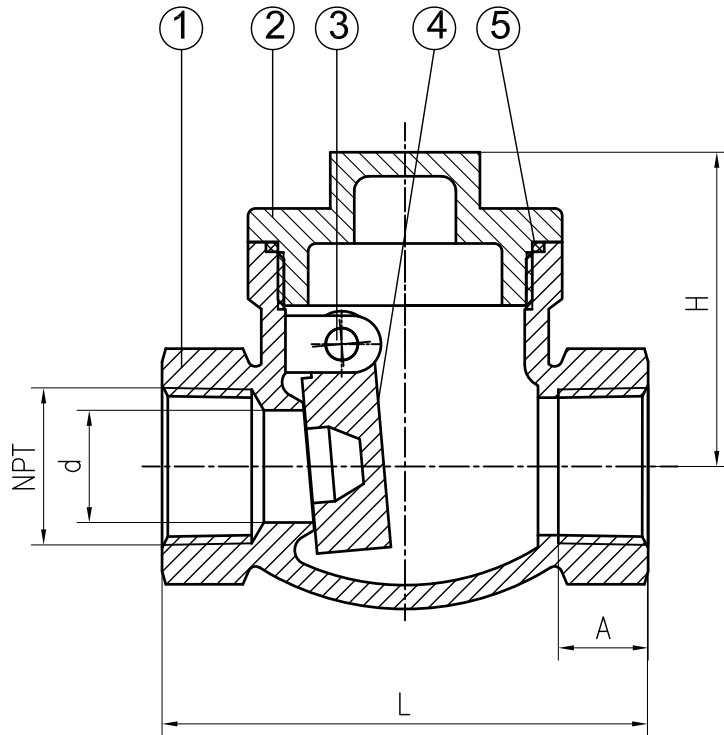
Rev.:

SIZE	L	d	H
1/4"	2.56	0.45	1.65
3/8"	2.56	0.45	1.65
1/2"	2.56	0.59	1.65
3/4"	3.15	0.79	2.01
1"	3.54	0.98	2.36
1 1/4"	4.13	1.26	2.6
1 1/2"	4.72	1.5	2.95
2"	5.51	1.97	3.15
2-1/2"	7.09	2.56	3.66
3"	7.87	3.15	4.09

DIMENSIONS

UNITS: INCH

07	SCREW	316	1PC
06	GASKET	PTFE	1PC
05	SEAT	PTFE	1PC
04	DISC	ASTM/A351/CF8M	1PC
03	PIN	SS316	1PC
02	CAP	ASTM/A351/CF8M	1PC
01	BODY	ASTM/A351/CF8M	1PC
No.	PART NAME	MATERIAL	QTY



Revisions			
A			
B			
C			
D			
E			
Drawn By		Date	2017-3-17
Checked By		Date	2017-3-17
Approved By		Date	2017-3-17
Certified By		Date	2017-3-17



Desc:

**SWING CHECK VALVE  
CK20SC**

Scale:

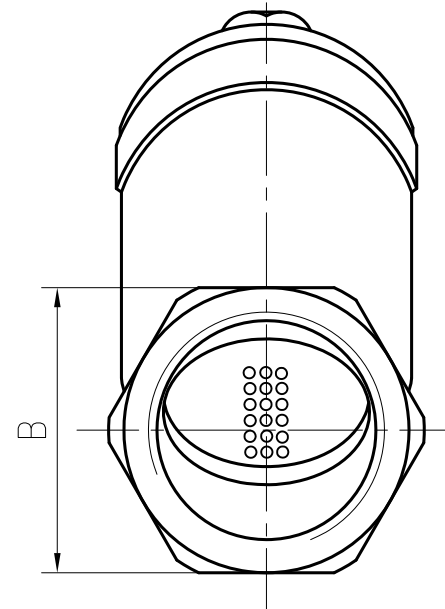
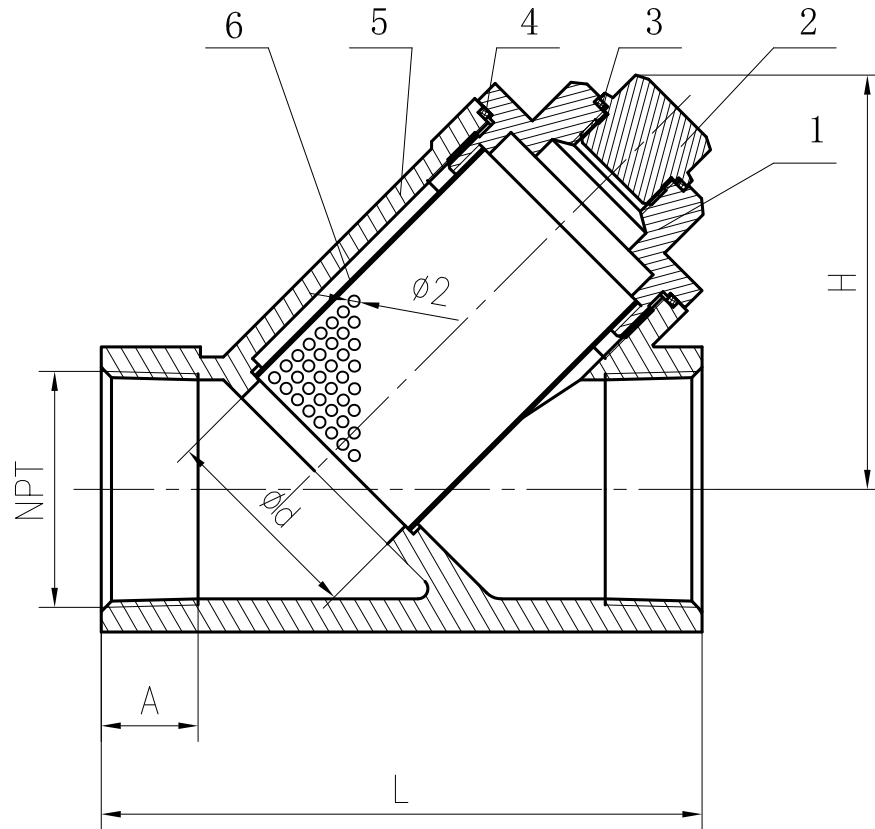
DWG No.:

Rev.:



SIZE	A	B	L	d	H
1/2	0.53	1.02	2.56	0.59	1.85
3/4	0.53	1.26	3.07	0.79	2.24
1	0.63	1.61	3.54	0.98	2.64
1-1/4	0.79	1.93	4.17	1.26	2.83
1-1/2	0.81	2.2	4.69	1.57	3.15
2	0.98	2.72	5.51	1.97	3.66

DIMENSIONS UNITS: INCH



06	MESH	SS316/A240/ASTM	1PC
05	BODY	CF8M/A351/ASTM	1PC
04	SEAL	PTFE	1PC
03	WASHER	PTFE	1PC
02	NUT	SS316/A276/ASTM	1PC
01	CAP	CF8M/A351/ASTM	1PC
No.	PART NAME	MATERIAL	QTY

Revisions			
A			
B			
C			
D			
E			
Drawn By		Date	2017-3-17
Checked By		Date	2017-3-17
Approved By		Date	2017-3-17
Certified By		Date	2017-3-17



Desc:

**Y-STRAINER  
YS80SC**

Scale:

DWG No.:

Rev.: